

# Geology field trip to South Central Idaho

## April 20-23, 2018

Terry Maley and Virginia Adler have set up a field trip for Geologists of Jackson Hole to visit several geologic features of central Idaho starting with Craters of the Moon. The date is April 20-22 and we will be staying in two different motels that you will need to make your own reservations. **Please email GJH Board Member John Guslander at [john@wyom.net](mailto:john@wyom.net) to reserve a spot.** The trip is limited to 30 people. Carpooling will be organized ahead of the trip rather than the morning of the trip since parking can be an issue and some people will leave earlier.

### Field Trip Itinerary of the Geologic Attractions of South-Central Idaho

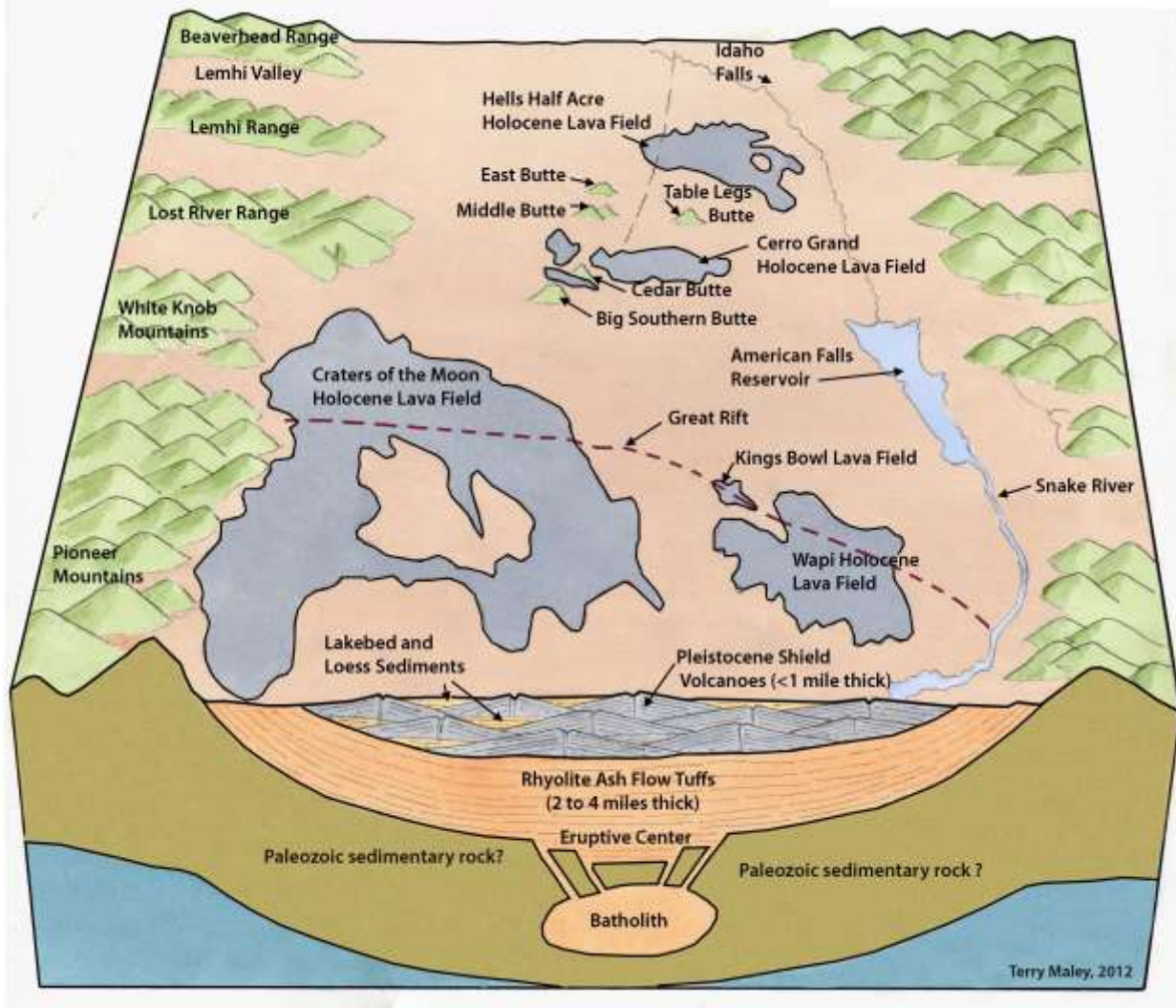
We will meet at the Craters of the Moon visitor's center at 12:30 p.m.

Some people will choose to arrive the night before

#### April 20, 2018

1. Great Rift and Craters of the Moon Lava Field -Arrive 12:30 - depart 3:30
2. Geology of the Wood River Valley - Arrive 5:30 - depart 6:00

Arrive at **Wood River Inn at 6:30**



**April 21, 2018**

Depart Wood River Inn at 7:30 a.m.

3. Shoshone Lava Field and Black Butte Shield Volcano

(We will also investigate bedrock erosion in the Big Wood River at this site. Site 4 shown on the map has better examples but much more difficult to access, especially in the spring.)

Arrive 8:00 - depart 9:00

4. Bedrock Erosion in the Big Wood River - See explanation in Site 3.

5. Gooding City of Rocks - Arrive 10:00 - depart 11:30

6. Malad Gorge -Arrive 12:00 , eat lunch, investigate site - depart 2:00

7. King Hill Melon Gravels (omitted unless we are ahead of schedule)

8. Bliss Land Slide Arrive 2:30 - depart 2:45

9. Canyon-filling lavas in the Snake River Canyon - Arrive 3:00 - depart 3:15

10. Hagerman Museum and the Hagerman “Melon” Valley

Arrive 3:30 - depart 3:45

11. Thousand Springs - Arrive 4:00 and depart 4:15

12. Colossal Flood Erosion Near Twin Falls

13. Shoshone Falls and Scabland

14. Snake River Plain Aquifer

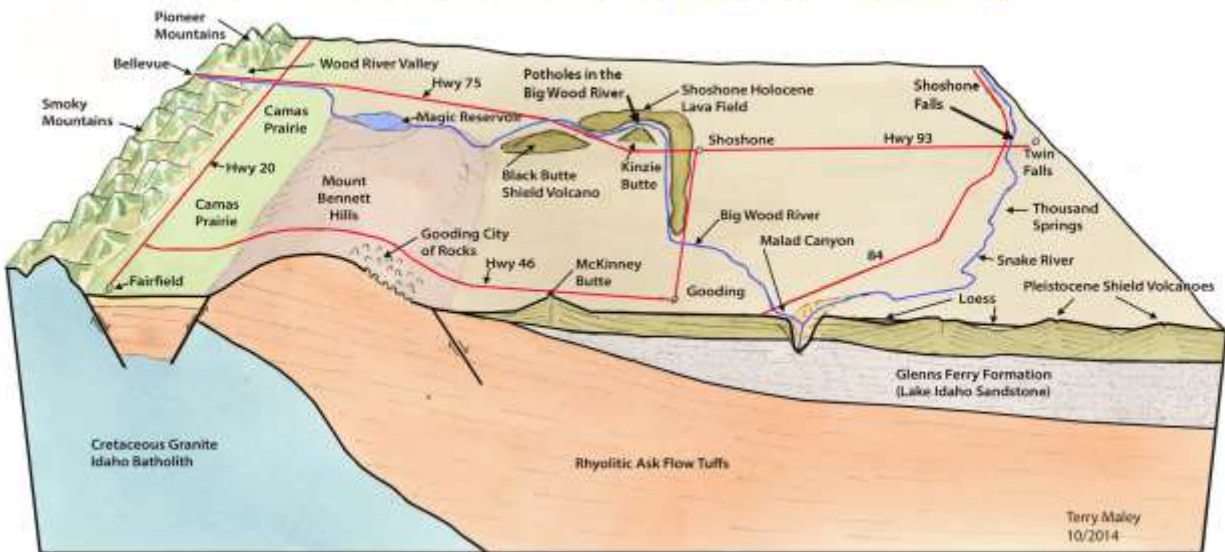
15. Snake River Flood Gold

Sites 12, 13, 14, and 15 can all be seen at the overlook of Shoshone Falls

Arrive at Shoshone Falls 5:00 and depart at 6:00

Arrive at **Best Western Inn in Twin Falls at 6:15**

## Looking East Across the Central Snake River Plain with a North-South Cross Section Showing the Subsurface Geology



**April 22, 2018**

Depart Best Western Inn at 7:30 a.m.

16. Metamorphic Core Complex of the Albion Mountains

Arrive at 8:45; after several brief stops south of Oakley depart 9:00

17. City of Rocks National Reserve - Arrive at 9:30 and depart about 1:00

## **Our trip leader**

Terry Maley has B.S. and M.S. degrees from Oregon State University and a Ph.D. in geology from the University of Idaho. He has been an avid field observer, photographer, and illustrator of geological features during more than 50 years of fieldwork. Now retired, he worked many years for the Department of the Interior conducting geologic investigations throughout the western United States. Before joining the Interior Department, He also served as Administrator for the Idaho Division of Earth Resources for five years with responsibility over all mineral resources, water resources, and geological research in Idaho. He has authored more than 50 technical papers on geological features and has written ten

books on regional geology, field geology and mineral law, including a third edition of ***Exploring Idaho Geology*** to be published in February 2018.

## Lodging

### **April 20, 2017**

We will stay at the Wood River Inn April 20th; however, if any participant wants to come a day early, that will be covered at block rate. The participants should individually call the Wood River Inn at 208-578-0600 or go to the website <https://www.woodriverinn.com>. Then use the block discount code: 18WGA.

The price is \$106.50 plus tax = \$123.54 for a single king. Two queens in a room is a few dollars more. Cancellation must be made 48 hours before arrival. Breakfast is included.

### **April 21, 2017**

Best Western Plus Twin Falls Hotel  
1377 Blue Lakes Blvd. N.  
Twin Falls, ID 83301

Call 208-736-8000 and ask to pick up a room off the block of **Jackson Hole Geologists**. The block of 15 rooms will be held until March 15.

The rate is a single king bed for \$87 plus \$7 tax for a total of \$94.

Two queen beds in one room is \$97 plus tax.